

## WHERE WE ARE



Street Art, Footscray, Melbourne, Victoria. N. Oke photo

The Master of Applied Psychology (Community Psychology) Program is delivered at the Footscray Precinct of Victoria University, Melbourne, Australia.

Footscray is an inner city suburb of the city of Melbourne, which is one of the most vibrant and cosmopolitan cities in Australia. Melbourne has been ranked as Number 1, the most 'liveable city' in the world for the last 4 years.

Melbourne was ranked highest on Stability, Health-care, Culture and environment, Education and Infrastructure. (See [http://www.eiu.com/site\\_info.asp?info\\_name=The\\_Global\\_Liveability\\_Report](http://www.eiu.com/site_info.asp?info_name=The_Global_Liveability_Report)).

## ENTRY REQUIREMENTS

### AUSTRALIAN:

- Applicants must have either:
  - (i) APAC accredited 4th year (H2A); or
  - (ii) APAC accredited three-year sequence in psychology together with an APAC fourth-year psychology course or equivalent (H2A).
- Applicants will be shortlisted, and then will be interviewed to assess suitability for the course.
- Relevant professional experience will be a substantial factor in selection.

### INTERNATIONAL (Additional Requirements)

- Applicants must have their credentials formally assessed by Australian Psychological Society (APS) for equivalency. See [www.psychology.org.au/](http://www.psychology.org.au/)
- Applicants apply through Victoria University International. See <http://www.vu.edu.au/courses/international/AMPC>
- IELTS minimum 6.5 (no band less than 6.0) or equivalent.

## HOW TO CONTACT US



Community Psychology Australia Web Site.  
<http://www.communitypsychologyaustralia.com.au/>



Community Psychology Australia  
Chat with current students on their Facebook



Victoria University Web Site <http://www.vu.edu.au/courses/master-of-applied-psychology-community-psychology-ampc>

**Email:** Program Course Coordinator  
[julie.vandeneinde@vu.edu.au](mailto:julie.vandeneinde@vu.edu.au)

# COMMUNITY PSYCHOLOGY

## MASTER OF APPLIED PSYCHOLOGY

### COMMUNITY PSYCHOLOGY

CRICOS Provider No. 00124K

(APAC ACCREDITED)



## COMMPSYCH@VU



### WHAT WE OFFER

In the Master of Applied Psychology (Community Psychology) there is a strong emphasis on the context of the individual, group, and community - in research and practice, and on applied psychology, in groups, agencies, and the community.

There are four interconnected components of the Community Psychology program,

1. A Theoretical component is in the community psychology specialist training. These include Introduction of Community Psychology, Psychology of Community Health, Community Psychology Interventions
2. Research Focus – A thesis. The thesis research is supported by 2 research units of study - Quantitative Research Methods and Qualitative Research Methods.
3. Placement Component -1000 hours overall in 3 placements conducted in community agencies.
4. Practice/Skills - Ethics & Professional Practice, Psychological Assessment, and Counselling Theories, Skills & Interventions.

## CAREERS

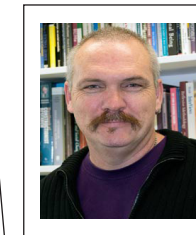
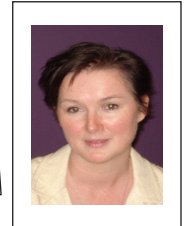


### RECENT GRADUATES ARE EMPLOYED AT

- Non-Government Organisations: working with Asylum Seekers Support, Survivors of Torture Support, avert homelessness with children and adults, QueerSpace for LGBTIQ communities, Migrant Support Services
- Social & Community Health Centres: Prevention and Intervention, Alcohol, Tobacco & other Drugs, Family Violence, Program Evaluation
- Government: Social Policy, Education settings, Disability Services
- Private Practice: Counselling, Psychological Assessment, Group Work.
- Academia: Many students pursue further study, and a career in Higher Education, & Research.



## STAFF



### COMMUNITY PSYCHOLOGY AT VICTORIA UNIVERSITY (CommPsych@VU)

Members of the CommPsych@VU team:  
(From top left to bottom right) Adrian Fisher, Christopher Sonn, Liz Short, Tony Love, Wally Karnilowicz, Julie van den Eynde, Jenny Sharples, Tim Corcoran, Sue Oliver.